



Welcome to Today's Request for Research Proposals Information Session

Thank you for joining early! Today's session will
begin shortly.

August 8, 2025



About CareQuest Institute

We are on a mission to improve the oral health of all by creating a system that is **accessible**, **equitable**, and **integrated**.

We champion oral health transformation because good overall health depends on good oral health.



Driving Change

To drive meaningful change, we address key oral health issues through a variety of perspectives and solutions.



Are you looking for more free dental CEs?

On your own time, explore our interactive, **self-paced courses** — featuring experts from across the industry — on topics shaping the future of oral health (and earn free CEs).



Scan to Learn More!



**Self-Paced
Courses**

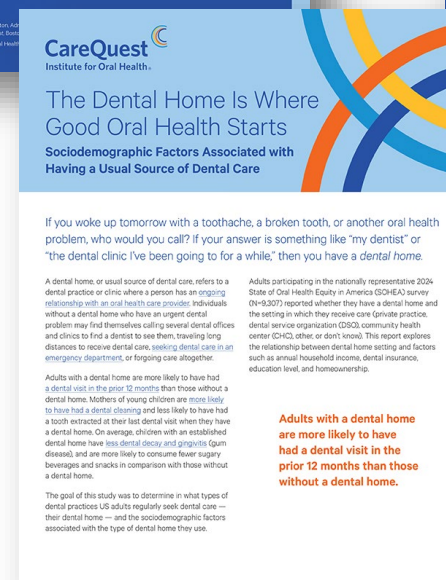
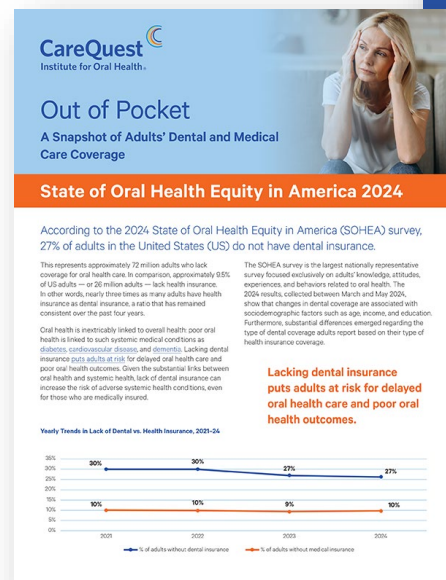
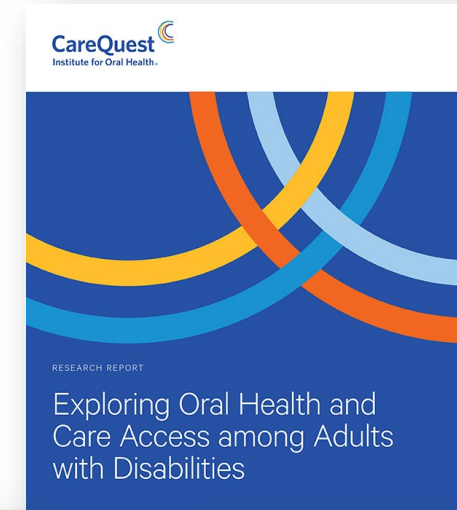
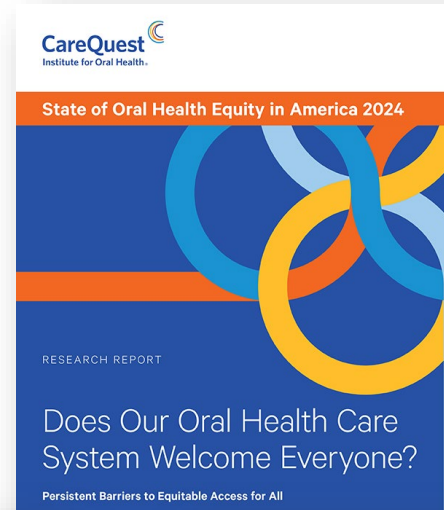
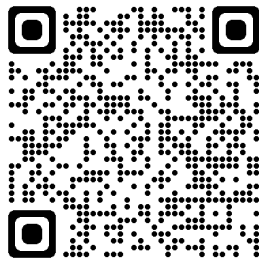


**Earn CE
Credit**

State of Oral Health Equity in America

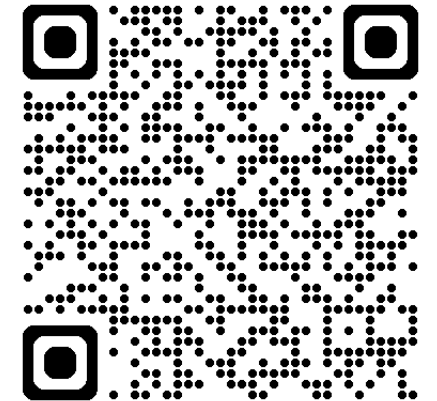
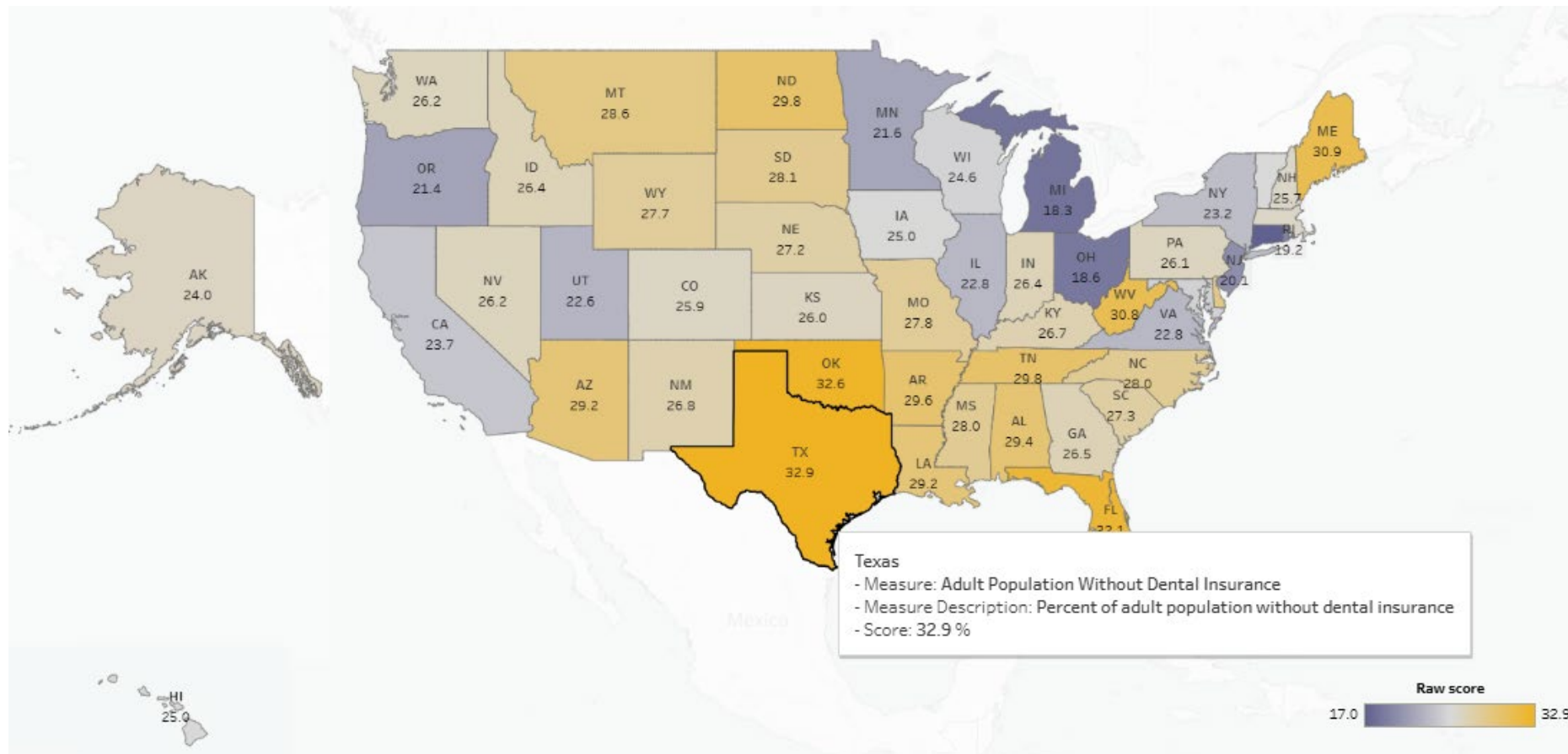
- Largest nationally representative annual survey about oral health
- Find out what **9,000** US adults had to say about their experiences with the oral health care system

Learn more



State Oral Health Dashboard

Access data for **16 measures** by state

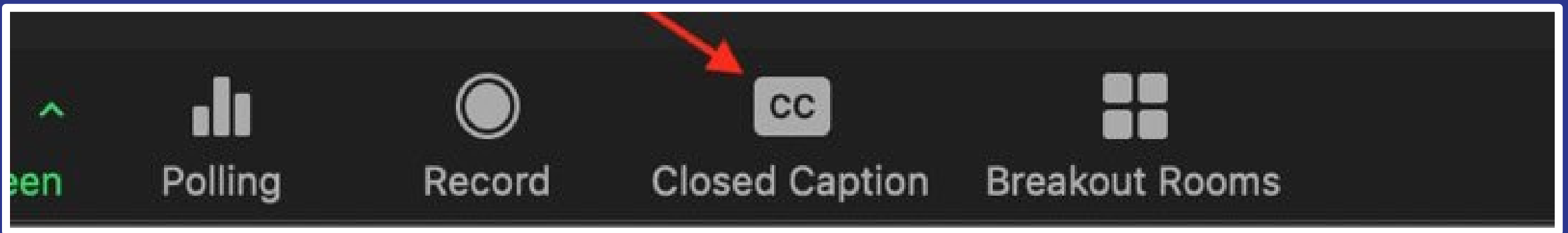


Q&A and Closed Captioning



- Feel free to enter your questions into the **Question & Answer box** throughout the presentations.
- We will turn to your questions and comments toward the end of the hour.

If you would like **closed captioning** for this program, please go to the bottom right-hand corner of your screen, select “more” from the toolbar, and then “captions” to enable this function.



Call for Oral Health Research Proposals



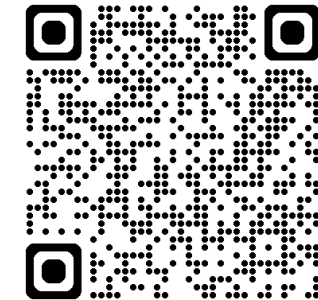
Awards **up to \$50,000**

Utilize our extensive data resources to complete a peer-reviewed journal submission

Proposal Deadline:

September 5, 2025, 5 p.m. ET

Learn More and Apply



Request for Proposals

Informational Meeting

August 8, 2025

About CareQuest Institute

At CareQuest Institute for Oral Health®, we operate as a catalyst for systems change, bringing forth ideas and solutions to create a more accessible, equitable, and integrated health system for everyone. We do this through our work in **philanthropy, analytics and data insights, education, policy and advocacy, and health transformation**, as well as our leadership in **dental benefits** and **innovation advancements**.

But we don't do it alone. Collaboration and partnership are key to achieving our mission — to improve the oral health of all.

Analytics and Data Insights (ADI) Team Mission

As the ADI Team of CareQuest Institute for Oral Health, we're here to drive systems change. We use our extensive database and unique analytical skills to drive **actionable insights** that lead to improved and equitable **whole health outcomes** and **total cost of care** through **integrated and accessible** oral, medical, and social data.

Purpose of this RFP

- Invite early-career researchers to analyze CareQuest Institute data
- Complete a research analysis project leading to a peer-reviewed journal submission
- Alignment with CareQuest's mission is essential
- **Funding available: up to \$50,000 per award for direct and indirect costs (F&A capped at 15%)**

Research Focus Areas

- Population oral health research through surveillance data & metrics
- Integration of medical and dental systems to improve & transform health care
- Revolutionize the health system to integrate oral health into overall health
- Understand factors that influence oral health equity for underserved populations
- Promote public policies to increase oral health care access and affordability

Eligibility Criteria

- NIH-defined early-stage investigator
 - Having completed terminal research degree or post-grad clinical training within the last 10 years, **and**
 - Having not previously successfully competed for an NIH R01 grant
- Affiliated with a U.S.-based accredited university
 - Full-time research or teaching staff
- Promising track record of conducting analyses & peer-reviewed publications
- Have expertise/technology available to analyze & report on large datasets
- Able to meet project timelines

Proposal Requirements

- Maximum of 4 pages (3 for proposal, 1 for budget)
- Sections follow abbreviated NIH SF 424 format including:
 - Specific Aims
 - Significance
 - Innovation
 - Approach
 - Resources & Environment
 - Personnel
 - Budget & Justification
- Proposals will be evaluated on these criteria, impact, and alignment with CareQuest Institute strategies

Overall Impact or Criterion Strength	Scope	Descriptor
High	1	Exceptional
	2	Outstanding
	3	Excellent
Medium	4	Very Good
	5	Good
	6	Satisfactory
Low	7	Fair
	8	Marginal
	9	Poor

Available Data Resources

- Integrated medical & dental claims (39M patients, 4.9B claims)
 - Medicaid and commercial claims, other sources
- Dental claims data (35M patients, 930M claims)
 - Medicaid and commercial claims, electronic health record (EHR) extraction
- Healthcare Cost & Utilization Project (HCUP) claims data
 - Emergency Department Data (State-level trends)
- State of Oral Health Equity in America (SOHEA) Survey
 - CareQuest Institute's national oral health survey, 2021–2025
 - Yearly samples sizes range from 5,200-9,450

Timeline

- August 1, 2025: Proposals open
- August 8, 2025: Informational meeting
- **September 5, 2025 by 5:00 p.m. Eastern time: Proposal deadline**
- October 31, 2025: Awards announced
- January 31, 2026: Analysis plans due for approved proposals
- December 1, 2026: Draft manuscripts due for CareQuest Institute review

Send proposals (Word or PDF) to analytics@carequest.org by Sept. 5


Grants Process

- These grants are supported by the CareQuest Board of Directors, Executive Leadership team and our Philanthropy Team.
- Once awards are announced, grants will be administered through our grants process.
- Grants will run over 2 years, with the second year being a preapproved no cost extension

Philanthropy: Grants in Oral Health

We address complex and upstream drivers of oral health disparities by investing strategically and providing collaborative, capacity-building support that leads to healthier communities.

[Take our funding eligibility quiz](#)



CareQuest Institute's Unique Approach to Phil...

Watch later Share

Watch on YouTube

be the perfect grantee fit for our grantmaking.

Question and Answer



Share your
QUESTIONS!

Submit questions for the
panelists in the Q&A box

Questions? Please contact.

Eric Tranby, PhD

Director, Analytics and Data Insights

etranby@carequest.org

Rebecca Preston, MPH, CHES

Program Manager, Analytics and Data Insights

rpreston@carequest.org

